



Jedox Mobile Guide



Version 6.0

Jedox Mobile Guide

Version 6.0

Jedox AG

Date: 8-Oct-2015

Copyright © Jedox AG

Copyright Reserved. Reproduction including electronic reproduction and substantive recovery - even of parts - only with the approval of Jedox AG. Legal steps may be taken in case of non-compliance.

Jedox, Worksheet-Server™, Supervision Server and Palo are trademarks or registered trademarks of Jedox GmbH. Microsoft and Microsoft Excel are trademarks or registered trademarks of the Microsoft Corp. All other trademarks are property of the respective companies.

For the purpose of readability, brand names and trademarks are not explicitly stressed. If a relevant description (e.g. TM or ®) is missing, it is not to be concluded that the name is freely available.

Table of Contents

1	Introduction	4
2	Installing Jedox Mobile Client	5
2.1	Installation for Apple iOS Devices (iPad/iPhone)	5
2.2	Installation for Android Devices (Phone/Tablet).....	5
3	Operating Jedox Mobile Client	6
3.1	Login Options	6
3.1.1	Using the Jedox Cloud (Demo) Environment	7
3.1.2	Using the Jedox Cloud.....	8
3.1.3	Using the Jedox Login	9
3.2	Navigation Bar and Browsing through the Application	10
3.3	Reports	14
3.4	Ad-Hoc Reports	15
3.4.1	Creating new report from Ad-Hoc Reports screen.....	18
3.4.2	Creating new Ad-Hoc Report as duplicate of existing Ad-Hoc Report.....	19
3.4.3	Creating a new Ad-Hoc Report from Reports screen	20
3.5	Documents.....	21
4	Jedox Mobile FAQ.....	22
4.1	How can I get access to Jedox Mobile to use it for my company?.....	22
4.2	How is the connection to Jedox OLAP working?.....	22
4.3	How many cubes can I access?	22
4.4	Can I change the layout of the Jedox Mobile Ad-Hoc Reports?	22
4.5	Where is my data stored?.....	22

1 Introduction

With the release of Jedox 6, Jedox unified *Jedox Mobile Touch* and *Jedox Mobile Ad hoc* into a single Jedox Mobile experience across devices and platforms. Single point of entry is the native App for both phone and tablet devices. With this App, users can seamlessly connect to the Jedox Cloud or existing Jedox 6 environment. Both Ad-Hoc analysis and Jedox Web reports as well as other content will be enabled. Jedox Mobile Server, needed by previous versions, was superseded in Jedox 6. Its functionality was replaced by an up to 30 times faster, native API powered backend integrated into the Jedox Suite, hence no additional installation and maintenance is needed.

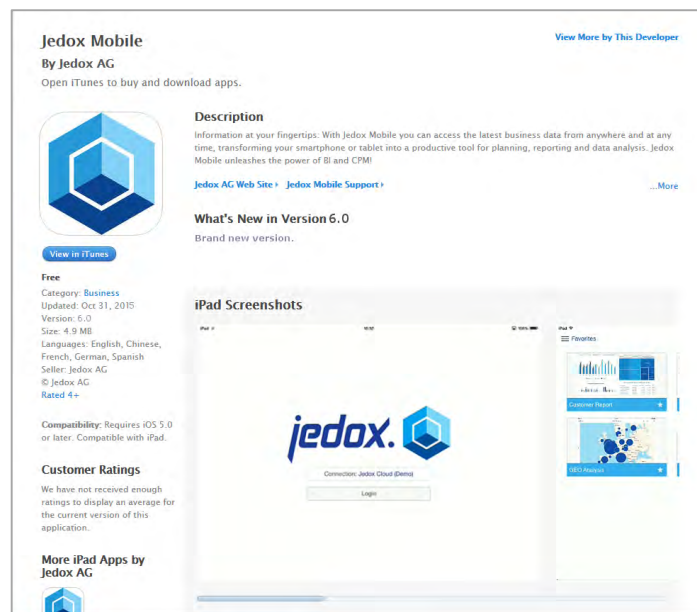
2 Installing Jedox Mobile Client

2.1 Installation for Apple iOS Devices (iPad/iPhone)

To install Jedox Mobile for Apple iPad please connect the phone with the Apple iTunes AppStore. This requires an Apple iTunes ID. You can install the Jedox Mobile App on your computer (with subsequent synchronization) or directly on your iPad.

To find the application please use our link on the Jedox homepage or use the search function with 'Jedox Mobile' as search term within the AppStore.

After the installation you will find the new Jedox icon on your iPad. Then new versions of Jedox Mobile can always be updated via the Apple AppStore.



AppStore Browser View

2.2 Installation for Android Devices (Phone/Tablet)

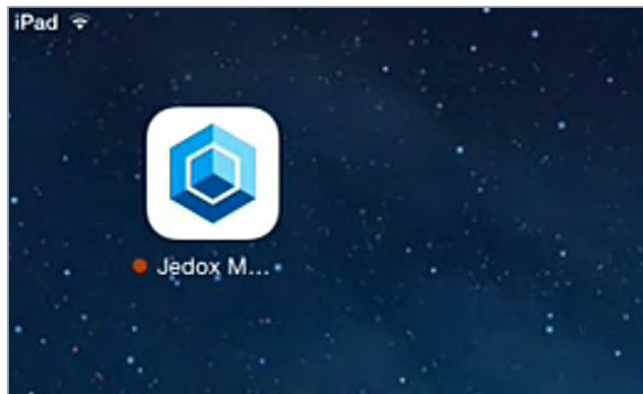
To install Jedox Mobile for Android device please connect the phone with the Google Play. This requires a Google account.

To find the application please use our link on the Jedox homepage or use the search function with 'Jedox Mobile' as search term within the Play Store.

After the installation you will find the new Jedox Mobile icon on your device. Then new versions of Jedox Mobile can always be updated via the Google Play.

3 Operating Jedox Mobile Client

After a successful installation you can immediately use Jedox Mobile:



Jedox Mobile Icon

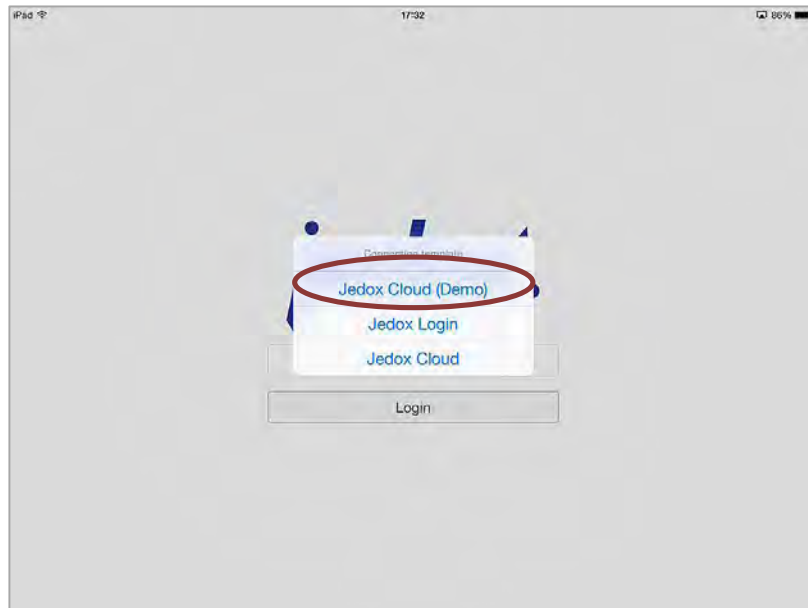
3.1 Login Options

You can choose one of the following Jedox accounts:

- Jedox Cloud (Demo)
- Jedox Login
- Jedox Cloud

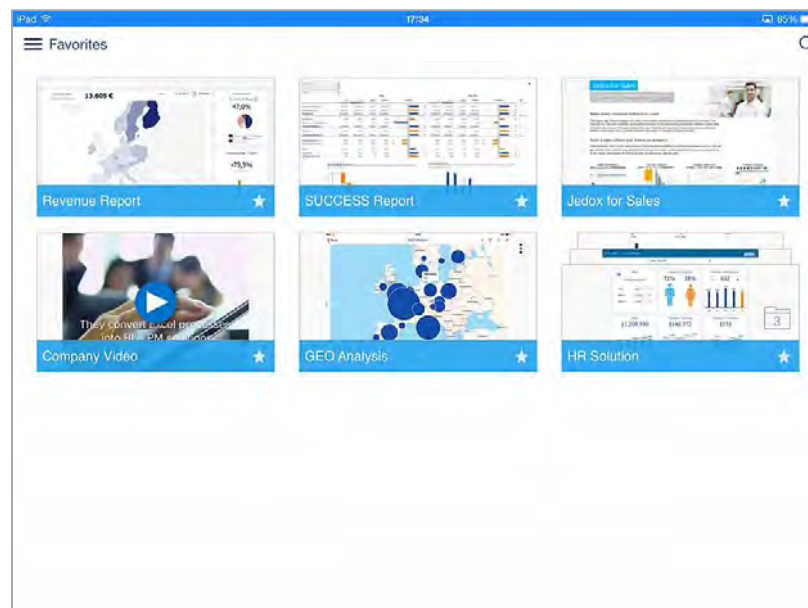
3.1.1 Using the Jedox Cloud (Demo) Environment

Jedox Mobile is delivered with a demo connection to the Jedox Cloud environment. After starting the application, please use the connection template 'Jedox Cloud (Demo)' to connect to the demo environment. This template does not require entering any credentials and is preselected by default after installation.



Jedox Mobile Login Screen

After clicking the login button you will be provided with the screen "Favorites" which looks like similar to this:



Jedox Mobile screen "Favorites" after logging into demo environment.

You can use Jedox Cloud (Demo) environment to explore the possibilities of the Jedox Mobile solution: open pre-installed reports, create ad hoc reports or open and organize pre-loaded documents.

3.1.2 Using the Jedox Cloud

To use the App to connect to Jedox Cloud, click on the connection button within the login screen, select 'Jedox Cloud' connection template, fill in your Jedox Cloud login credentials (those you use to connect to Cloud Console) and click on the 'Login' button.



From there you continue to use the App similar to Demo, only with your data, reports and files from your cloud environment.

3.1.3 Using the Jedox Login

To use the App to connect to Jedox, click on the connection button within the login screen, select “Jedox Login” connection template, fill in your Jedox login credentials (those you use to connect via Web Browser to Jedox Web) and click on the ‘Login’ button.

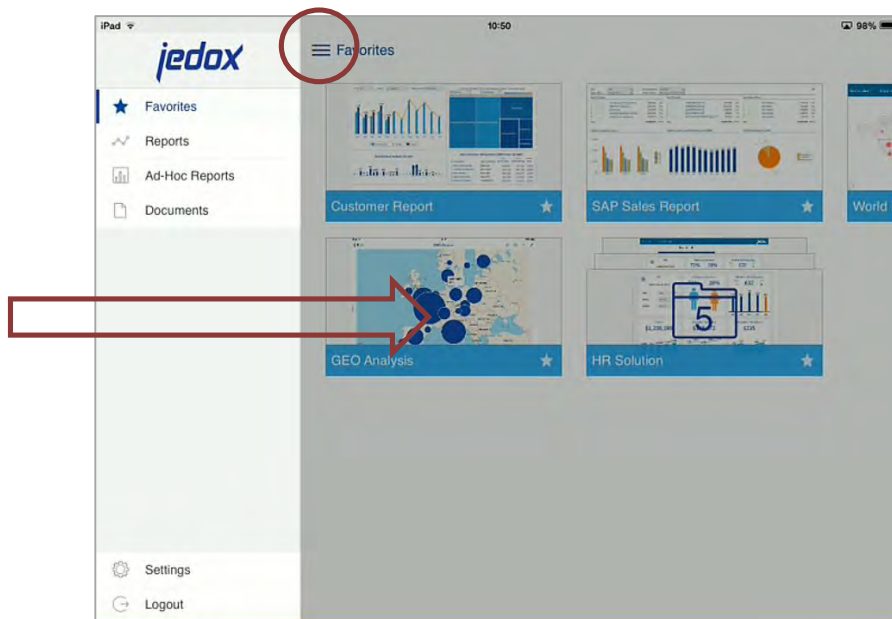


From there you continue to use the App similar to Demo, only with your data, reports and files from your Jedox Web installation.

3.2 Navigation Bar and Browsing through the Application

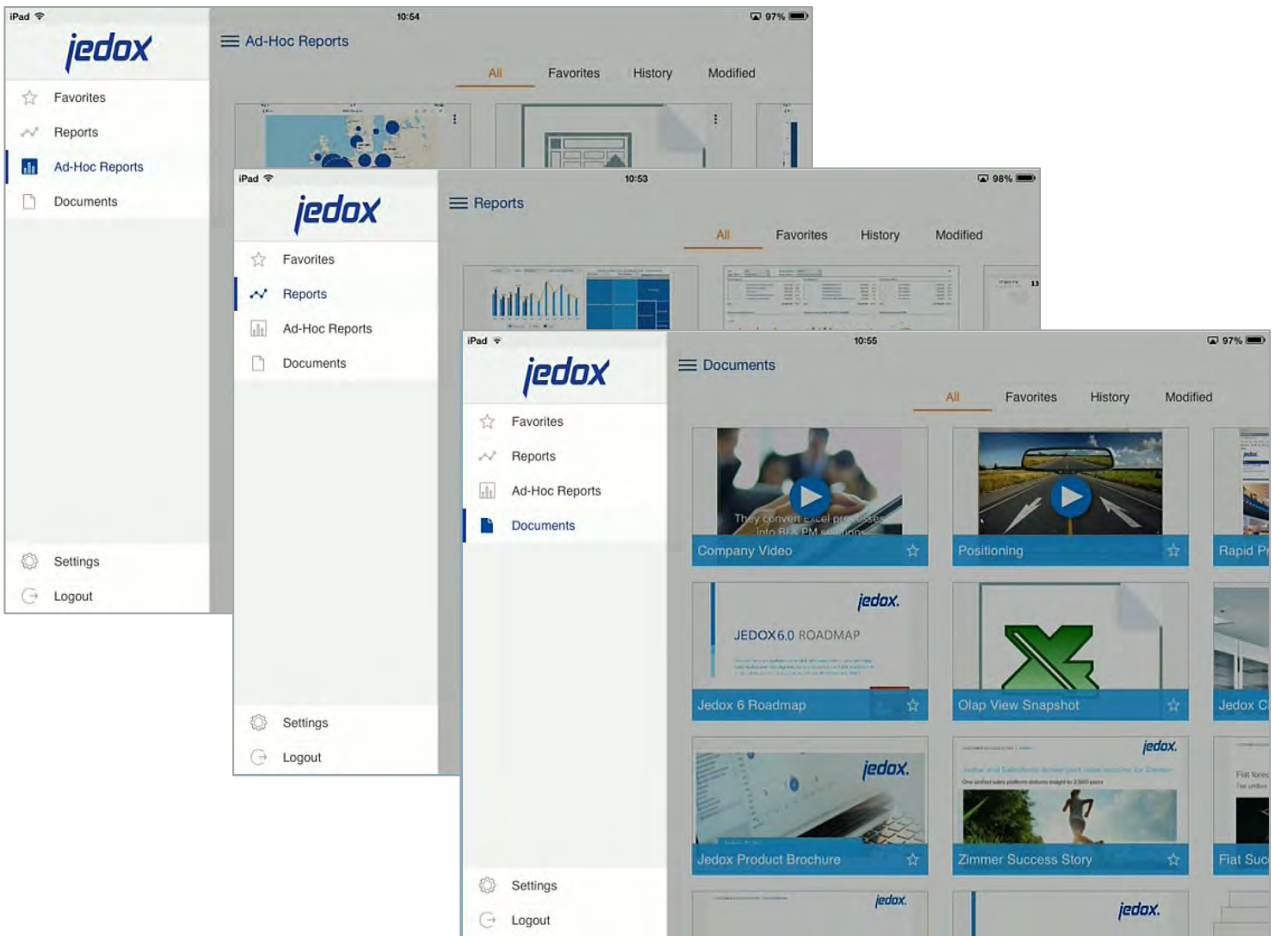
Initially when you log into the application, there will be presented the screen "Favorites". This screen displays all the content which was marked as favorite. This can be Reports, Ad-Hoc Reports, Documents or Folders (groups and mixes of each of those). If the screen "Favorites" is empty, i.e. no content is marked as favorite for current user, the App will automatically switch to Reports screen.

You can open the navigation bar by swiping from the left side of the screen to the right or clicking on the menu button on the top left corner. In the upper part of the navigation bar, there are buttons used to switch between four main screens within the application:

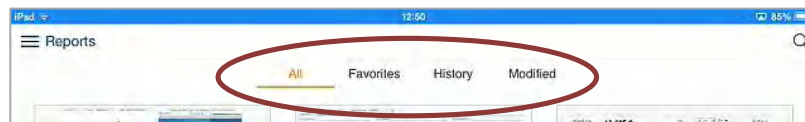


- Favorites (described above)
- Reports – shows all Jedox Web reports inside the default report group for that user (see Jedox Web documentation for more information on this)
- Ad-Hoc Reports – shows all Ad-Hoc Reports available for current user
- Documents – shows all Documents stored inside Jedox Web and available for current user. This can be third party content not managed by Jedox, e.g. PDF, PPT, Images, etc.

Reports, Ad-Hoc Reports and Documents screens share the same layout. Objects are represented with object tiles aligned to a grid which adjusts depending on the size and layout of the display on the target device.

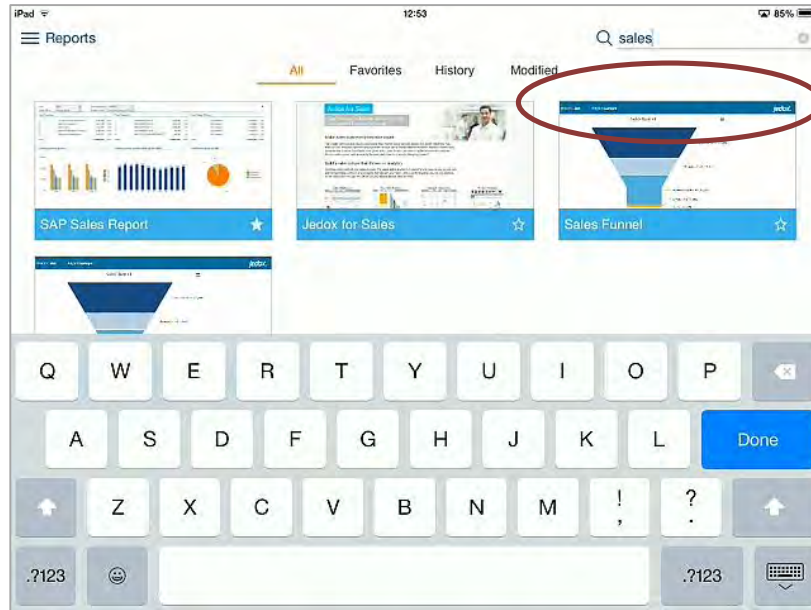


There are four tabs on each screen used to filter out content:

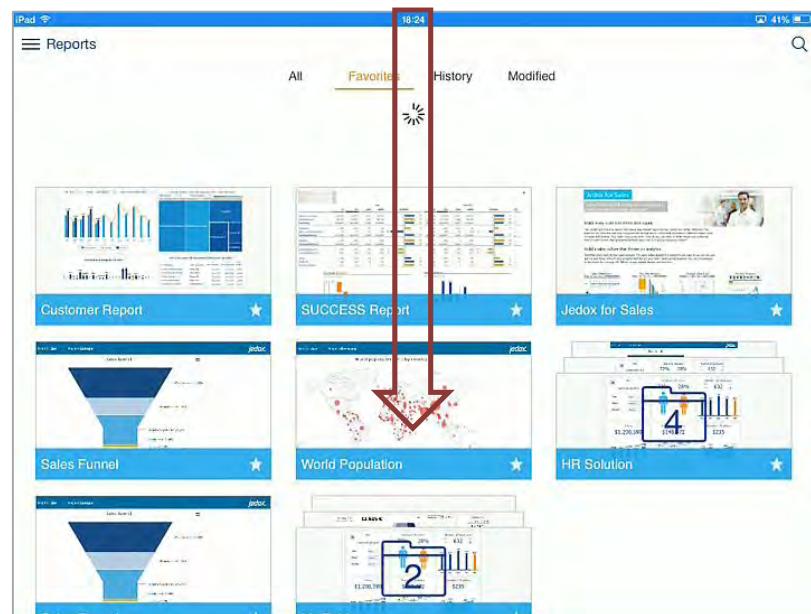


- All – shows all objects, no filter is applied.
- Favorites – shows only objects marked as favorite.
- History – shows recently used objects.
- Modified – shows recently modified objects.

In addition to this basic filtering, additional search criteria can be applied. On the top right corner, there is a search field. Typing in search term, will narrow down search results, i.e. display only objects whose name matches the search term.



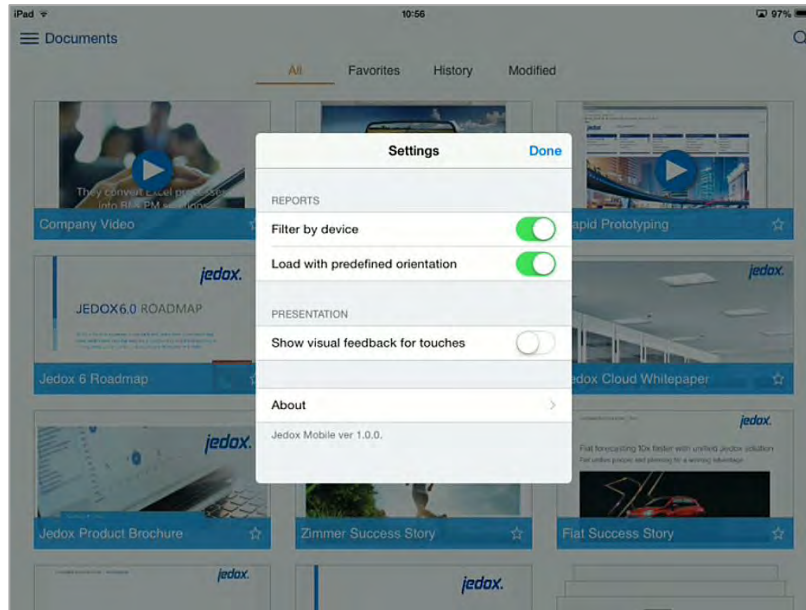
Each tab allows for *pull to refresh* which will refresh the list of objects, fetching the updated content.



Clicking on the object icon will open the object.
 Clicking on the star icon will mark the object as favorite.

In the lower part of the navigation bar there are the Settings and Logout buttons.

The settings dialog enables the user to control some aspects of the application as well as display information about the product:



- *Filter by device* – when enabled it will display only reports which are tagged with an appropriate tag. Currently tags tablet and phone are supported.
- *Load with predefined orientation* – when enabled it will try to force layout which is tagged for report. Currently tags landscape and portrait are supported.
- *Show visual feedback for touches* – when enabled it will display touch feedback (circle) at the spot where the user has touched the screen.
- *About* – shows information about the product.
- Version information.

Logout button will terminate current session and lead user to the initial screen with the login mask.

3.3 Reports

Once you are in the Reports screen, you can navigate, filter and open reports. These reports are Jedox Web reports created and published to Report Manager. By default, the app will display reports published to the report group marked as default. See Jedox Web documentation for more information on creating and publishing reports. Once the report is opened, you can use the button "<Back" to close the report and navigate back to the report screen. You can use the share icon on the top left corner to share/display a report via native share control, e.g. send current snapshot as PDF attachment via email.



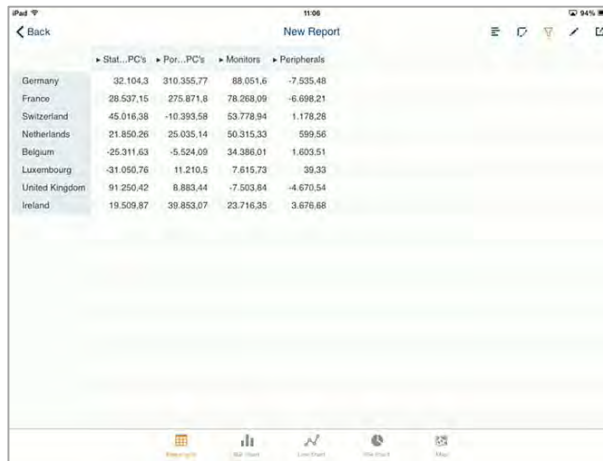
3.4 Ad-Hoc Reports

In screen "Ad-Hoc Reports" you have the option to open, modify, organize and create new Ad-Hoc Reports. These reports are dynamic reports managed by the App. You can use the buttons at the bottom of the screen to switch between layouts.

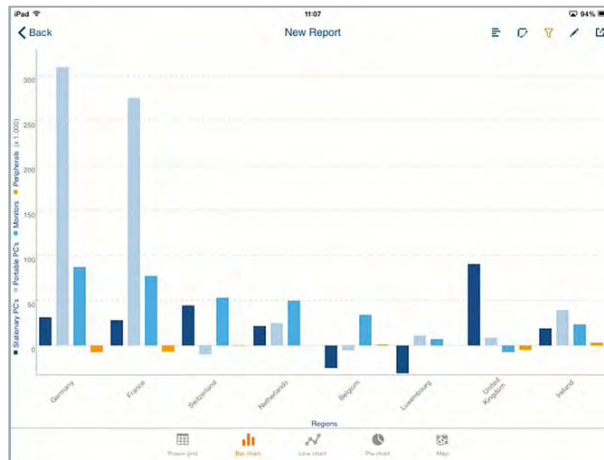


It allows for displaying data in:

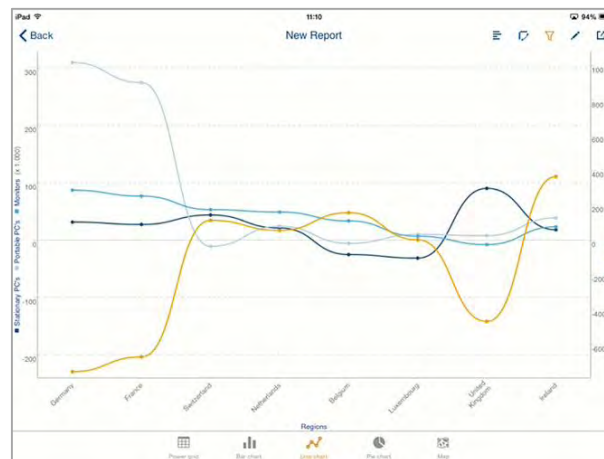
- Power grid – spreadsheet-like layout:



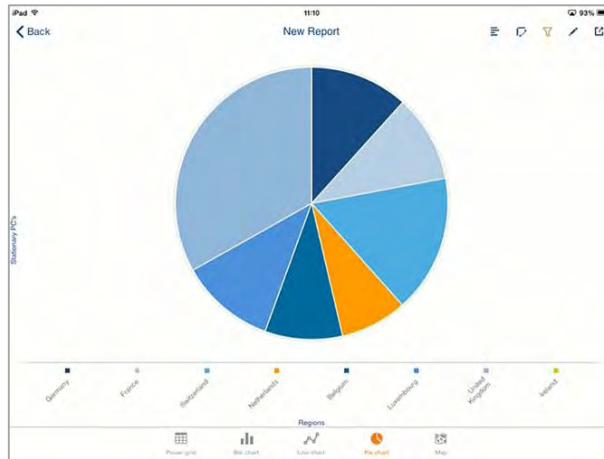
- Bar chart:



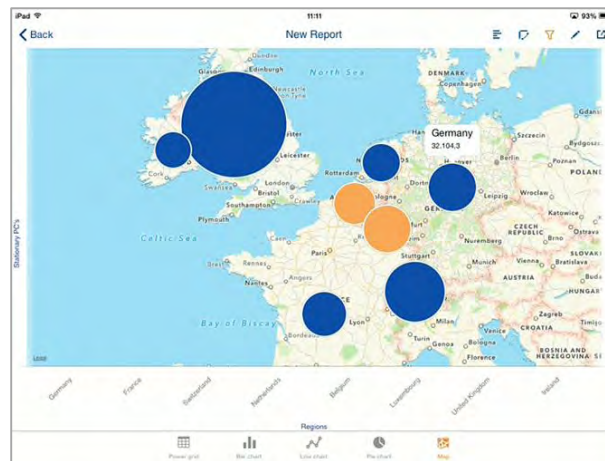
- Line chart:



- Pie chart:



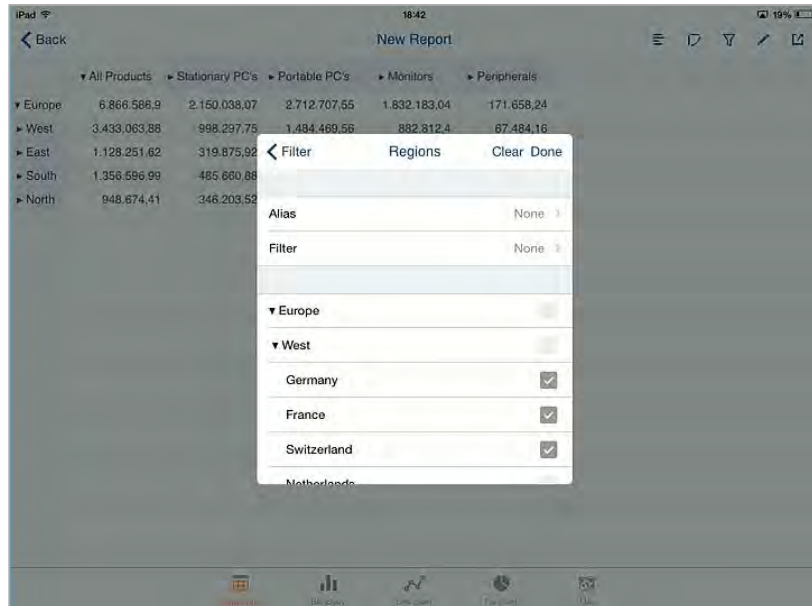
- Map – provided the dimension on row contains Latitude and Longitude attributes map layout will be possible:



When in Power grid layout, you can use the toolbar on the upper right side of the screen:



- Toggle data bars – to toggle displaying of data bars in cells of the power grid.
- Swap – to swap dimensions on column and row axis.

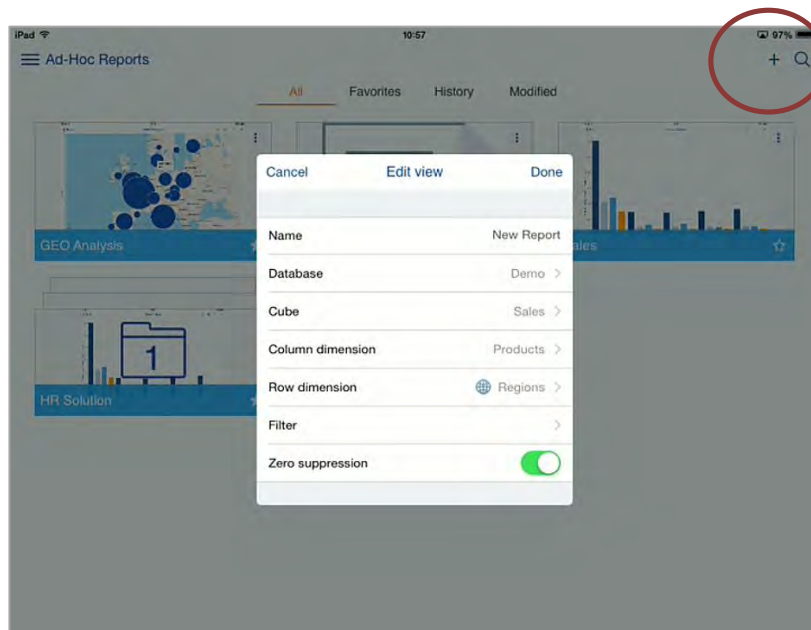


- Filter – to apply filter criteria on point of view dimensions.
- Edit – to edit the layout of the view, e.g. choose which dimension will be displayed.
- Share – to use standard share functionality on the device to open current layout in third party application, e.g. current data grid as PDF attachment in the mail client on device.

Same controls with exception of "Toggle data bars" work in other layouts.

3.4.1 Creating new report from Ad-Hoc Reports screen

To create a new Ad-Hoc Report, click on the symbol plus (+) from top right corner of screen "Ad-Hoc Report" (bottom left on Android devices). This will open a Create/Edit view dialog:



By default, this dialog will preset:

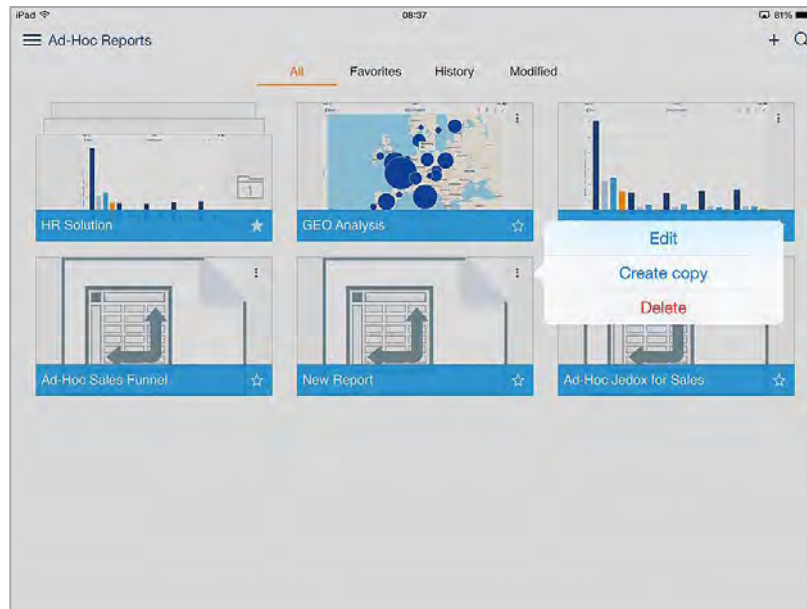
- Name of the report to *New Report*
- Database to the first database for current connection
- Cube to the first cube from the selected database
- Column to the first dimension in the selected cube.
Dimension corresponds to dimension whose elements will be shown on the columns
- Row to the second dimension in cube.
Dimension corresponds to dimension whose elements will be shown on rows
- Filter will not be set but can be used to preselect *point of view*, i.e. header elements. In Version 6.0 we introduced support for aliases, i.e. alternative labels used for display.
- Zero suppression, when turned on, will filter out elements which contain no data/0 values. Dimension which contain attributes latitude and longitude will be automatically marked for use within GEO widget. It is also possible to automatically create these two attributes based on geographical data.

Clicking on "Done" will create and open new Ad-Hoc Report.

3.4.2 Creating new Ad-Hoc Report as duplicate of existing Ad-Hoc Report

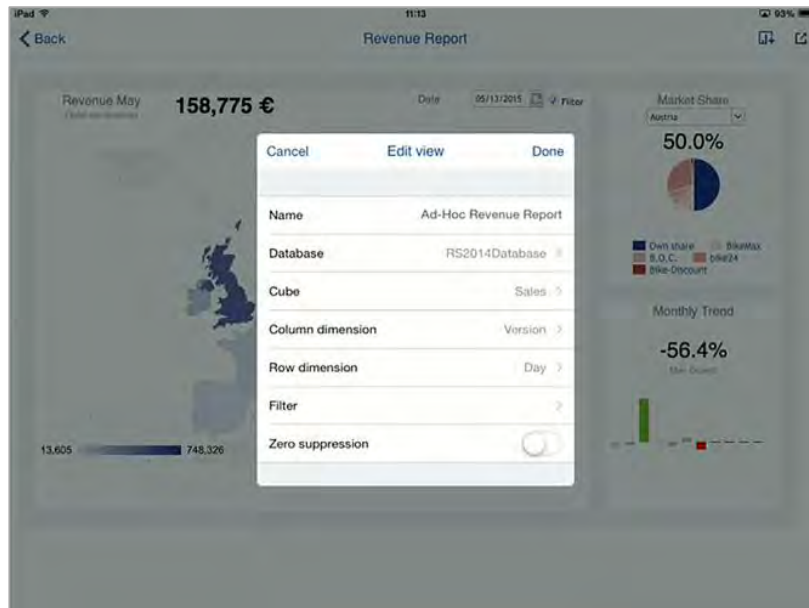
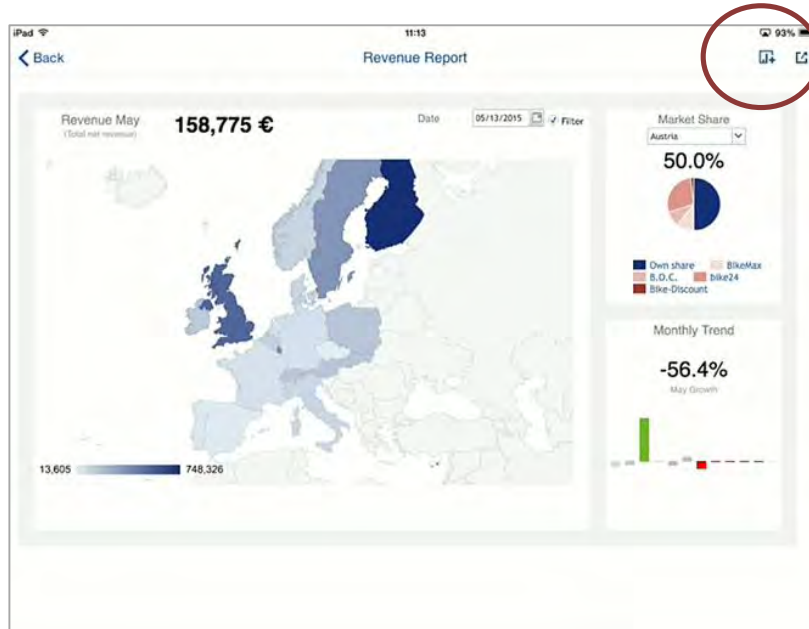
It is possible to create a new Ad-Hoc Report as duplicate of an existing Ad-Hoc Report. To do so please tap on the top right corner on the report tile you want to duplicate. This will open popup menu. Choose *Create copy* to create copy of the existing report with the same set of settings and open it. A number will be added as suffix to name of the newly created report, e.g. if the original report was called “My Report”, newly created one will be called “My Report 1”.

From the same menu you have also the option to edit or delete the report.



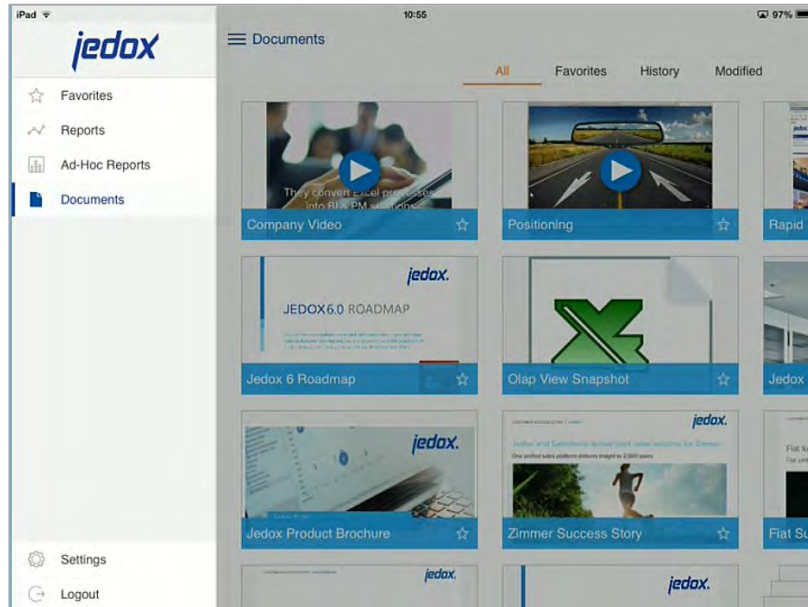
3.4.3 Creating a new Ad-Hoc Report from Reports screen

If Jedox Web report contains information about database and cube used, i.e. exposed in session variables *idx_database* and *idx_cube* (see Jedox Web documentation for more information on session variables) then additional button will be visible on the top right corner of the screen. Tap on that button to open Ad hoc Report definition dialog.



3.5 Documents

Documents screen shows all documents stored inside Jedox Web and available for current user. This can be third party content not managed directly by Jedox, e.g. PDF, PowerPoint files, images, videos, as well as folders, etc. If you try to open a document for which there is a native app on the device to handle this file format, Jedox Mobile will offer to open the document in this app automatically, e.g. in Excel, PowerPoint or Acrobat Reader.



4 Jedox Mobile FAQ

4.1 How can I get access to Jedox Mobile to use it for my company?

Besides having a Jedox Suite account, this is of course a requirement, Jedox Mobile has one other component, this is the native Mobile Client Application.

The Mobile Client Application can be downloaded using the Application Store of the mobile device. For example you can find the iPad Jedox Mobile App in the Apple AppStore.

To test Jedox Mobile you don't need the Jedox Suite. Just use the ready to run sample applications included in the Jedox Cloud Demo setup coming with the Mobile Client.

4.2 How is the connection to Jedox OLAP working?

The Jedox Mobile Application is connecting using http (or https) to Jedox. Jedox Suite is handling the connections to Jedox OLAP Server using the fast native API.

To use Jedox Mobile via UMTS or Wi-Fi (internet connection), the Jedox Suite has to be accessible for the Jedox Mobile App. Firewall settings etc. may need to be adjusted.

4.3 How many cubes can I access?

There is no limitation. A connection is always made to one Jedox OLAP server during one session. All databases and cubes available on this server can be accessed.

4.4 Can I change the layout of the Jedox Mobile Ad-Hoc Reports?

You can change the layout of the power grid view

4.5 Where is my data stored?

All data is stored in Jedox OLAP Cubes on the Jedox OLAP Server instance accessed by Jedox Mobile. Documents (PDF, PPT, etc.) may be stored offline on the device in a dedicated secure App storage if opted for storing login credentials during login.